

Photo of Mt. Rainier, an active volcano in Washington State's Cascade Mountain Range by S.Webb, Black Diamond, Washington

Systems Update

Have you noticed new form designs in your paperwork from Heath Custom Press? A new systems integration is in progress here, and upgrading our software means upgrading our Customer Service!

One new feature that will be implemented at Heath is Credit Card Acceptance. Many of our customers have shown interest in using credit cards for payment, and our new system will be able to process those transactions. Look to future newsletters and on the web for more information and timelines.

The Web

Newly posted on the Heath Custom Press Website:

Technical Document A1132.00
Installation and Adjustment Procedure for Replacement of B3619 Swing Stop Block on a Heath 2-Color Pak-to-Pak Press

Parts diagram for 2-Color Pak-to-Pak Sway Block. For supplement to Pak-to-Pak Parts manual.

Both documents are posted on the Technical Support page. Use the link to Heath Pak-to-Pak Press.

Technical Tip TT0008
Mabeg Feeder Registration Solution

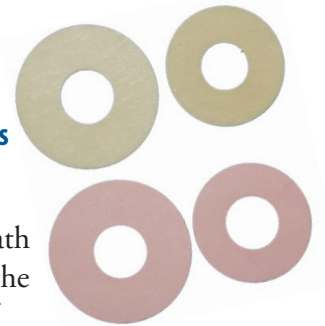
This document is posted on the Technical Support page. Use the link to Heath Sheetfed Chek Press.

Happy New Year!

Featured Part

F5688 F5689 F5690 F5691

Mabeg Feeder Rubber Suction Disks



Wondering which suction disk you need to order for your Heath Sheetfed Chek Press? Here is the breakdown of the four types of disks:

F5688
Small Tan 1 1/4" Diameter X 1mm Thick

F5689
Large Tan 1 1/2" Diameter X 1mm Thick

F5690
Small Pink 1 1/4" Diameter X 1/32" Thick

F5691
Large Pink 1 1/2" Diameter X 1/32" Thick

This parts list is also available in the Mabeg Feeder Parts Book on our website.

Tech Tip

Mabeg Feeder Registration Solution

When the Heath Sheetfed Chek Press stops after a job has been run, and the sheets are stopping at or underneath the upper feed roller, the press may throw sheets up into the roller train and dampener.

Normally timing the feeder to the press should correct the problem. If it does not, check the following:

Turn off the power to the press and turn the feeder handwheel to lock the feeder clutch into position.

Turn the handwheel to check the left to right movement of the feeder sucker housings. This movement should be about 1/8" left to right, viewed from the operator side of the feeder. If this movement is excessive (more than 1/8") the feeder clutch halves may be worn and will need to be replaced. Replacement part numbers are F4080 and F4082.

These parts will last for many years, but eventually will need to be replaced.

Also check the feeder drive gear mesh and backlash, where the long chain from the press drives the feeder. If the gears are worn the feeder will act like it is out of time. Replace the worn parts.

Replacement part numbers are SC1256 Sprocket/Gear Assembly with Bearings and F4278 Mabeg Gear.

To keep these gears in good order we recommend lubricating at least once a month with a good gear or chain spray lubricant.

This technical tip can also be found on our website on the Technical Support Page. Use the link there to the Heath Sheetfed Chek Press.

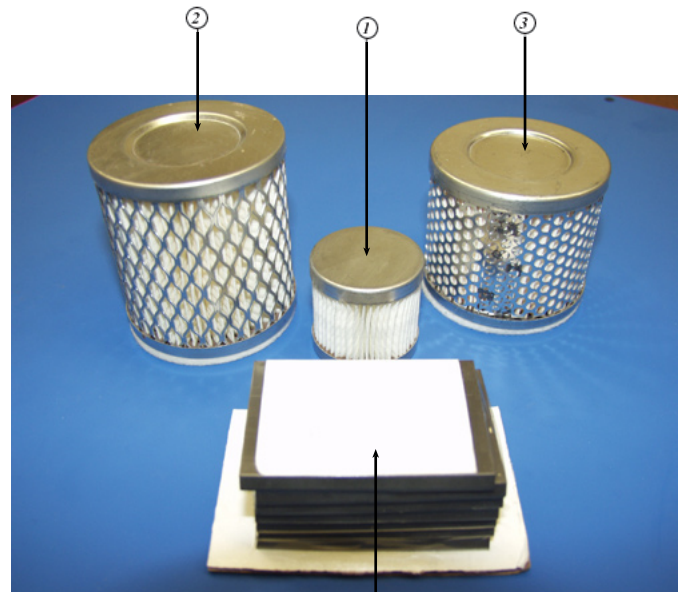
The parts diagrams can be found in the Heath Mabeg Feeder Parts Book on the Mabeg Parts Page of our website.

Vacuum Pump Filters & Vanes

Heath Sheetfed Check Press Mabeg Feeder

Check your filters and vanes on your Heath Sheetfed Chek Press Mabeg Feeder annually. Replacement parts are shown below. It is recommended that you replace all cartridges and vanes at once to reduce down time on your presses.

This parts diagrams can also be found in the Heath Mabeg Feeder Parts Book on the Mabeg Parts Page of our website.



- 1 F5155 FILTER CARTRIDGE
- 2 F3717 FILTER CARTRIDGE
- 3 F5154 FILTER CARTRIDGE
- 4 F5467 FILTER CARTRIDGE (Not Shown)
- 5 F5172 VANE (1 SET = 7 VANES)